

focus on community

0.1 North Cornwall's MP Dan Rogerson / visited TDP's Office on Friday 5th November, as part of a series of autumn and winter meetings to debate relevant issues to the practice and the wider community.

A small group of influential experts met with Dan Rogerson including; Ian Knight and Dave Wheeler from the Homes and Community Agency (who fund Affordable Housing), Rob Finch from Devon and Cornwall Housing Association, Alan Fox from the Cornwall Community Land Trust/Cornwall Rural Housing Association, John Titcombe from Kier Construction, Ed Heynes from Savills, plus James Trewin and David Savage from Trewin Design Partnership.

This particular forum focused on Government proposals to revise the planning system and also how Affordable Housing schemes can be funded in the future, with little or no grant being available from central Government.

Ed Heynes outlined the principle changes envisaged to the planning system which aim to embrace the Government's latest community initiatives known as "Localism".

It intends more planning decisions to be made by local people at a local level which on the surface sounds an attractive proposition.

However, concerns were raised to the MP that this may turn into a "Nimby's Charter" which could significantly frustrate the legitimate aspirations of individuals or businesses to obtain Planning Approval. As always, with such initiatives, the "devil is in the detail" and Dan Rogerson was asked to express the Forum's concerns to Housing Minister, Grant Shapps.

The debate also discussed the planning and funding of Affordable Housing in the Westcountry. Dan Rogerson has long been a strong supporter of the area's need for Affordable Housing but conceded that following the Comprehensive Spending Review the funding of



North Cornwall's MP / Dan Rogerson

Affordable Housing is going to get much tougher.

The Forum agreed that new, innovative ways of funding Affordable Housing needs to be addressed immediately. If no government funding is available the only real option is to allow a percentage of open-market housing on Housing Association exception sites. The

sale of a limited number of houses can fund properties for rent to local people.

All those present felt the forum was a useful opportunity to focus on issues facing the industry. Similar forums will be set up over the coming months to discuss other relevant topics.

0.2 Trewin Design joins the team for Cornwall's Eco Town in St Austell / Devon Architects, Trewin Design Partnership has been selected to join the



Cornwall's Eco Town in St Austell / winning Architects

innovative team for the pioneering St. Austell & Clay Country Eco-Communities regeneration project in mid Cornwall by Developers Eco-Bos.

The competition to design sustainable housing for the eco-communities attracted 58 design entries from throughout the UK.

Holsworthy based Trewin Design Partnership were delighted to be selected as one of the six winning architects. Participating practices were to demonstrate a background in sustainable homes sympathetic to the Cornish surroundings and building traditions. The eco-communities project is one of just

4 projects afforded Eco-Town status in the Country. As a consequence, Cornwall Council is set to receive a share of government funding to help kick start the regeneration process. The sustainable new communities are to be created by re-developing 6 redundant china clay mining sites to provide more than 5,000 homes, new jobs, a sustainable transport infrastructure, leisure facilities and green space.

'As a local firm we are delighted to be selected as a winner in a national design competition. We are currently working closely with Eco-Bos and other architects to finalise our proposals for a planning submission early next year.'

0.3 Wildlife Interpretation Centre & Tea Rooms / Stunning new tea-room at Whalesborough to provide a spectacular and welcome rest for its walkers and cyclists.

The two-mile walk from Bude to the Whalesborough tea rooms has been a popular activity for many years and now with a new building, located in a more prominent position it will also provide great facilities to passersby from the adjacent A39 'Atlantic Highway'.

The new building, which brings together an interpretation centre and tea-room, will nestle into a steep hillside on the edge of a newly created lake, at the head of the Bude Canal.

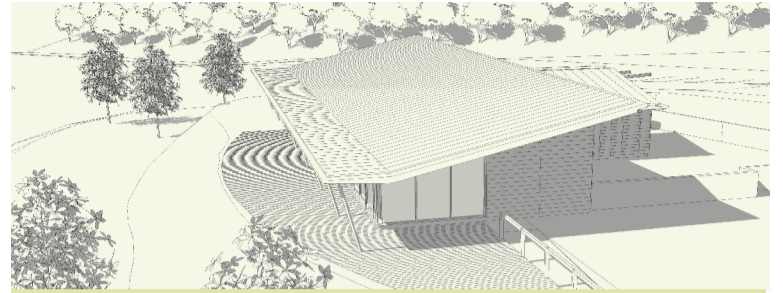
The building is clad with weatherboarding and has a low-profile zinc roof which gently rises towards the views beyond.

The front elevation has a long stretch of full height windows that open onto a raised deck,

which cantilevers out over the lake.

Alf Trewin of Trewin Design said: "at an early stage in the design process our Clients James and Fraser Proudfoot emphasised their requirements for the project to include air source heat pumps, under floor heating, passive ventilation, maximum solar gain and rainwater harvesting." He went on to add: "The project is a major scheme for the community and for tourism in providing both a wildlife interpretation centre and a tea room, amidst a delightful woodland valley setting".

The development has begun and is due for completion in spring 2011.



Whalesborough / Interpretation Centre & Tea Room



0.4 Ashwater Village Hall / Trewin Design Partnership are pleased to announce the opening of a commemorative village hall in Ashwater, North Devon



Ashwater Village Hall / Multi Purpose Community Hall

The hall is built on a site donated by the late Jack Moon, long-standing member of the parish. Another stalwart supporter of the project was the late Des Shadrack, a Torrridge District and Holsworthy Town Councillor, and both men have had rooms in the building dedicated to their memory.

The hall's design is flexible and provides a multi-purpose community hall that incorporates an innovative ground source heating system and photovoltaic cells.

The subsequent sustainable electricity

consumption will keep the hall's environmental footprint as small as possible.

The design has been kept simple by using features common in a rural landscape.

Good views from the main hall not only create a bright, attractive interior but also provide a pleasant outlook over the rolling Devon countryside.

Members of the new hall committee have described the hall as "rising like a beacon of hope in difficult times", following more than a decade of their dedicated community action.

0.5 Kilkhampton Sports Pavilion / An exciting contemporary sports pavilion is under construction in the rural village of Kilkhampton in north Cornwall.

This community project will provide a much needed replacement to the derelict buildings on the existing playing fields at Lamb Park.

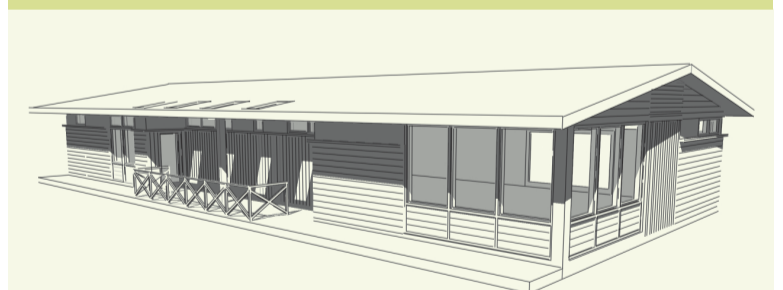
The part community-funded scheme includes changing facilities for home and away teams, meeting rooms with a kitchen and storage rooms for equipment.

Trewin Design's proposal shows a lightweight, timber-clad, highly-insulated

building, under a standing seam zinc-style roof.

Air source heat pumps will provide the heating. Trewin Design Partnership is proud to be associated with the local firms, builders, tradesmen and villagers that have come together to assist with this project and ensure the parish benefits from new recreational facilities.

Proposed Kilkhampton Sports Pavillion



0.6 Sutcombe School

Trewin Design Partnership has completed their programme of works at Sutcombe Primary School.

Our works included reinstating the original classroom for the younger children and forming a well defined and spacious main school entrance, linked and overlooked by a new, private office for the Headmistress and the School Secretary.

The final design for the new works is sympathetic to the original school design yet simultaneously modern with its use of high quality materials.

0.7 Festive Fun / TDP were involved with a local school to design their Christmas card.

'Thank you to all the pupils at Kilkhampton Infants and Junior School for kindly producing the artwork for TDPs Design a Christmas Card Competition'

The competition helps TDP to support the School in raising funds for a new water tank for Rugot School in Uganda. A selection of the winners and entries are displayed below.

